



ROMAGNOLI
MARINE SOLUTION



POWER FOR EXTREME CONDITIONS

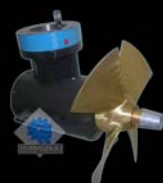
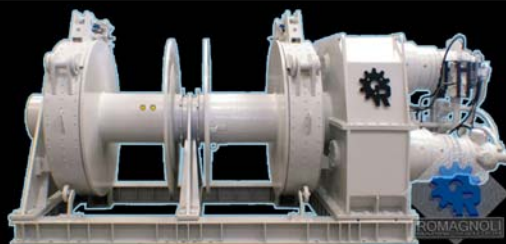
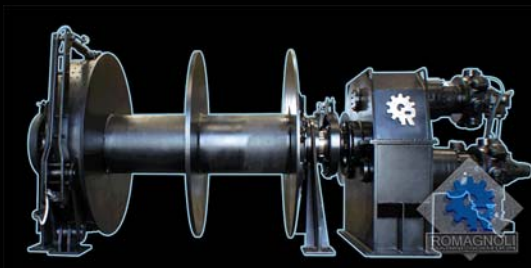
www.romagnoliom.com

Tug



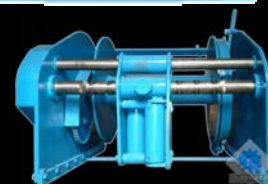
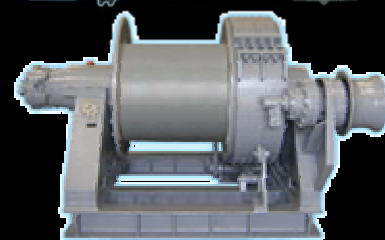
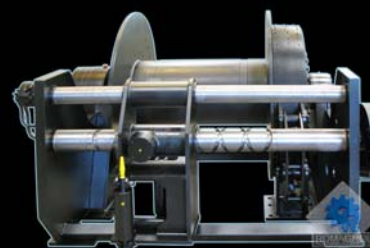
Escort

Escort Winch 100- 580 kW, Couch screen control -PLC
Combined Split drum-Anchor / 200m rope 120 mm.
Pull 40-280 ton Variable speed . Rendering 50-350 ton Brake 80-500 ton
(RPVCS) Romagnoli Power Variable Control System (NEW)

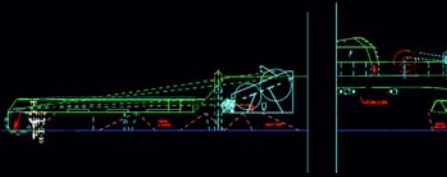


Towing - Harbour

Control -PLC
Winch 30 - 500 kW. Pull 20-280 ton Variable speed .



Off Shore Supply

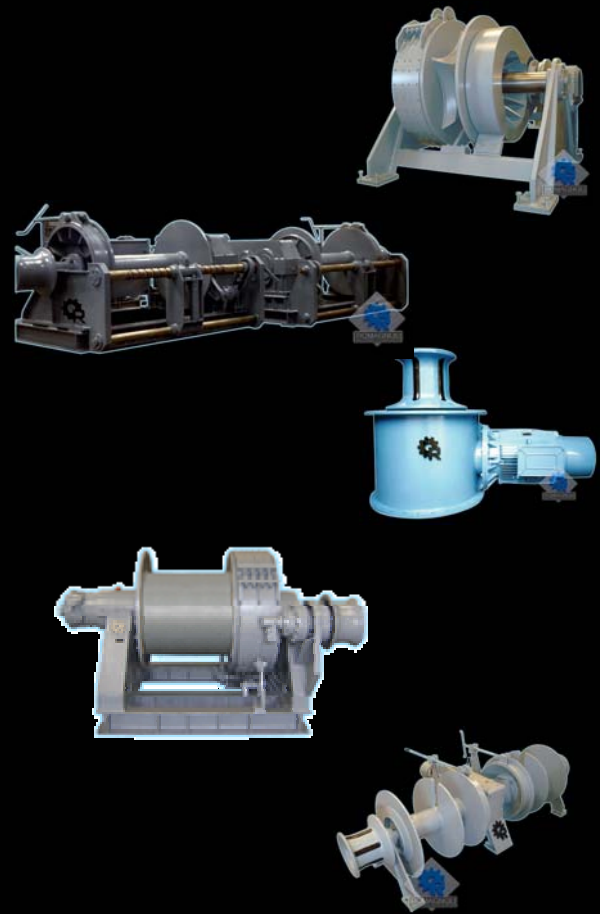


Supply Vessel AHT

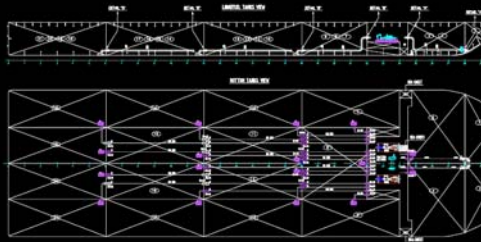
Offshore platform

A.H.T. Winch 100-900 kW. Brake 1500-3500 kN
 Drum upper: suitable for 800m wire 62 mm
 Drum lower: suitable for 400m wire 62 mm
 Spooling device, Hydr. drum Pull 400-2500 kN Double speed
 Tugger winch, Rope reel. Thruster 15-500 kW

Winch (100-900 kW), Capstans (15-300kN), windlass,
 autotension winch, combined-special winch



Barge and Special Vessel



Winch , Capstans (15-300kN), Spud winch, windlass, autotension winch, combined-special winch

PUMP AGGREGATE (100-350kw)
 Diesel Motor + Water pump Garbarino +
 Aternator Meccalt + Hydr serv Pump

